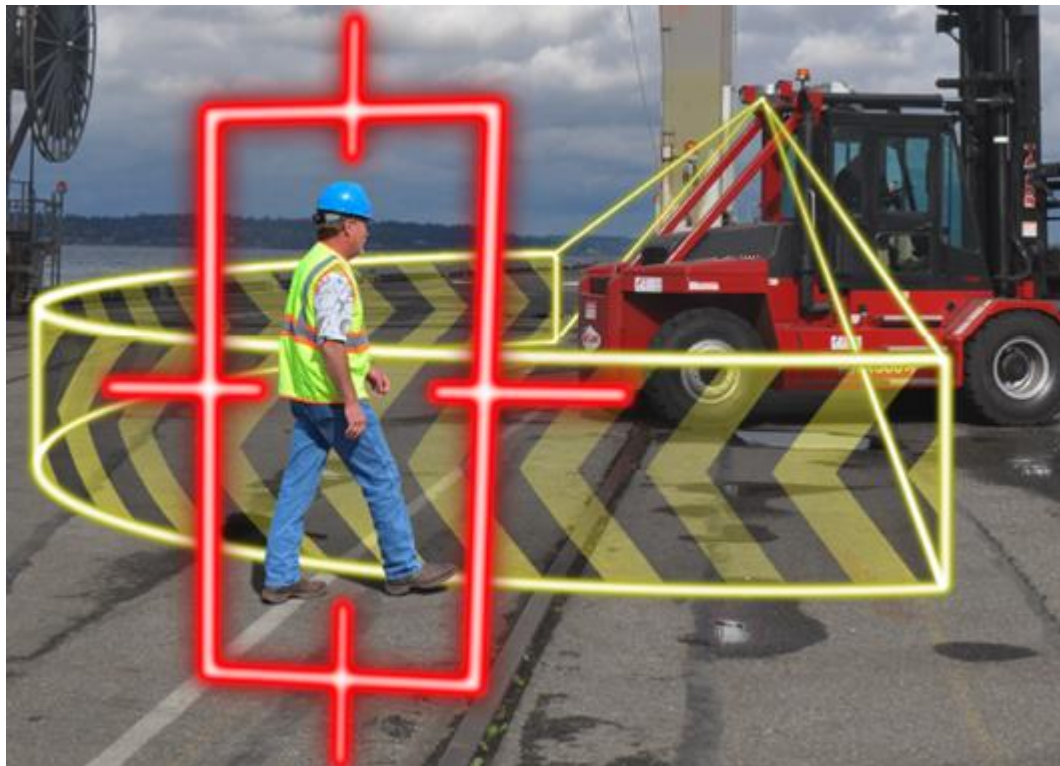


Logtronics PDS System

PDS autonomously detects pedestrians within 15 m of your machine and alerts the operator.



What is PDS?

Via cameras, the PDS system detects any pedestrians in the vicinity of the machine – in real time!
The system is an adaptation of automotive anti-collision technology designed for autonomous driving.

While PDS is active, the operator of the machine is warned automatically as soon as there are pedestrians within a radius of 15 m around his machine.

In case of imminent collision with pedestrians standing, kneeling or walking within the work area of the machine an audible and visual alarm is triggered.

The system can also be extended to shut down the hydraulics of the machine in the event of a collision alarm.

The system can be expanded with:

- 1 camera = 90° surveillance arc
- 2 cameras = 180° surveillance arc
- 4 cameras = 360° surveillance arc



The great advantage this system has to offer is that the people do not have to be equipped with a special device in order to be detected.

PDS autonomously detects pedestrians in the area without requiring additional equipment.

Why PDS?

PDS has been designed to avoid industrial accidents like the following:

NEWS OPINION SPORTS LIFESTYLE PREEN ENTERTAINMENT BUSINESS TECHNOLOGY GLOBAL NATION

METRO 6 SHARES    

Metal beam falls from tower crane in San Juan; 2 killed

By: [Frances Mangosing](#) - Reporter / @FMangosingINQ INQUIRER.net / 05:

MANILA, Philippines—Two people were reported killed after a metal beam fell from a tower crane at a construction site in San Juan City last Friday afternoon.

JUST IN NEWS SPORT LIFESTYLE COMMUNITY JOBS MOTORING RI

NEWS

Man thrown from excavator in work site accident

by [ANDREW KORNER](#)

9th Jun 2017 9:17 AM | Updated: 9:48 AM

UPDATE 10am: AN excavator driver has been taken to hospital following an accident at a landfill site this morning.

The man was thrown from the cab of his machine about 9am after rolling at the site on Memorial Dve at Swanbank.

He sustained arm and leg injuries.

An ambulance spokeswoman says the man is in a stable condition and is being taken to Ipswich Hospital.

EARLIER: PARAMEDICS are on their way to an accident involving an excavator at a Swanbank landfill site.

A machine rolled at the site on Memorial Dve about 9am.

A Queensland Ambulance Service spokeswoman said initial reports suggested the driver was thrown from the cab and has sustained arm and leg injuries.

quirer said the beam fell to a c
1 Street.



Ministry of Labour officials are investigating a fatal industrial accident in which a 55-year-old woman succumbed to her injuries Friday at the Canadian Electrocoating Limited plant located at 945 Prince Rd. in Windsor's west end.

Windsor Police Services and Ministry of Labour officials said they were notified of the accident at 8:30 a.m.

Ministry of Labour spokesman Bruce Skeaff said the investigation is still in its infancy.

"It was reported that at the time of the incident, a worker was in the Paint Line area when some bins full of parts fell on the worker," Skeaff wrote in an e-mail response.

"Emergency services were dispatched and attended the scene.

"The coroner also attended the scene and the worker was pronounced deceased.

A Ministry of Labour inspector was sent to the scene.

Shortly after the accident workers at the plant were told they could go home.

